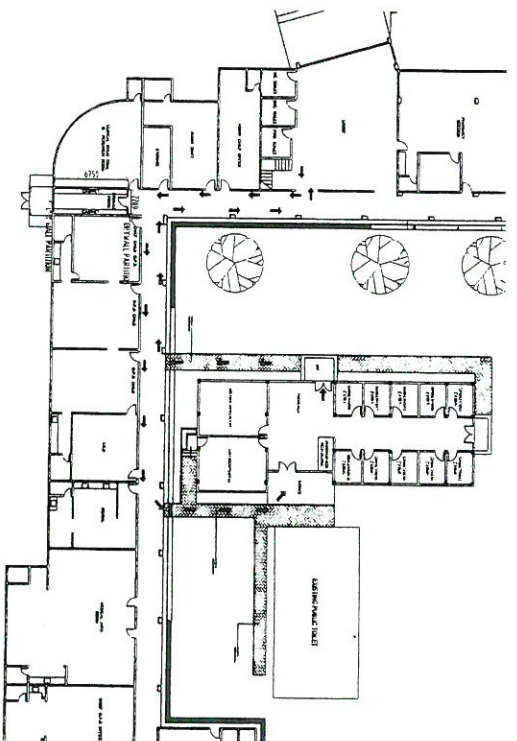



# P E R S P E C T I V E

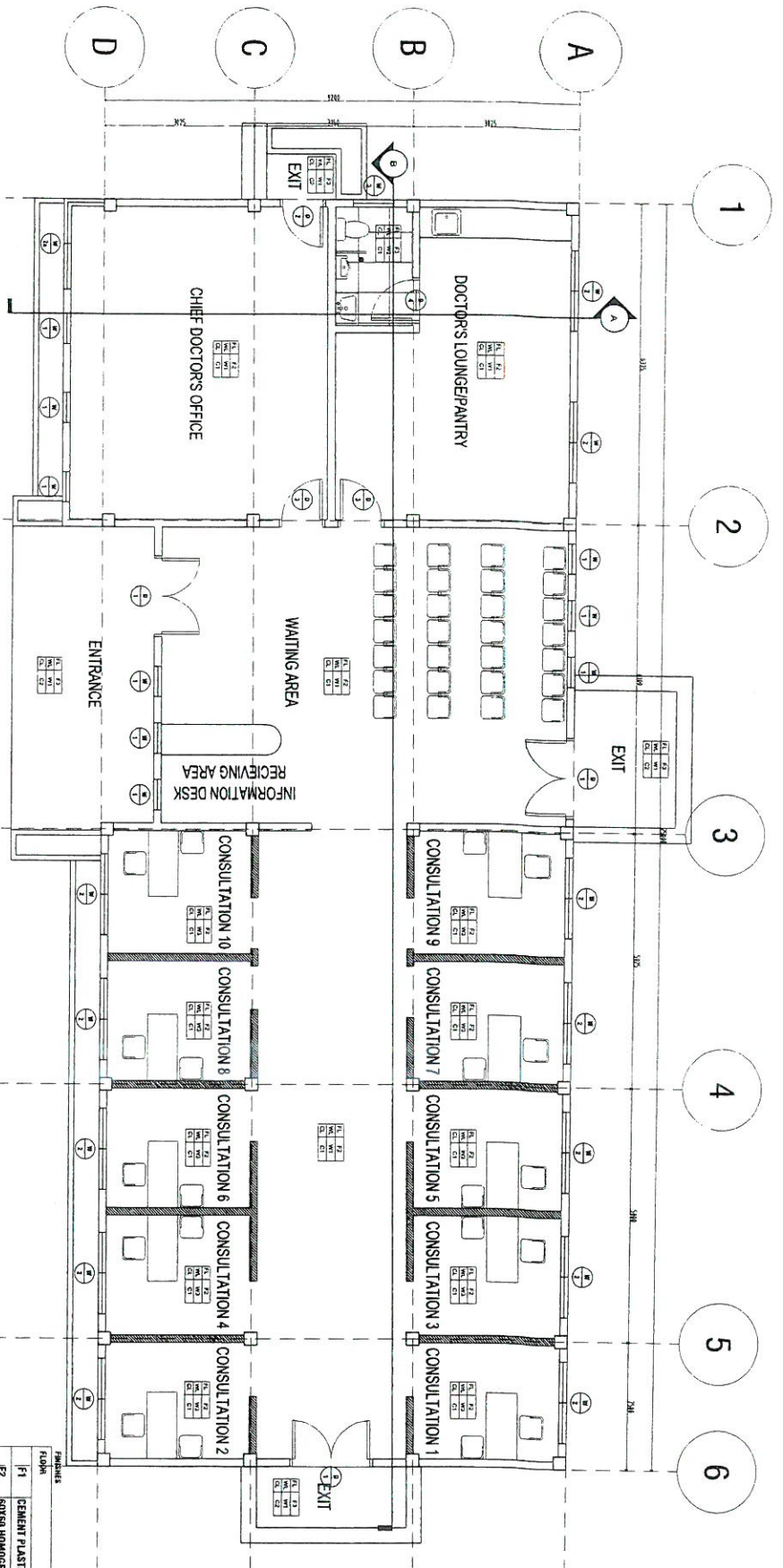
## TABLE OF CONTENTS

ARCHITECTURAL	
A1	PRELIMINARY LAYOUT OF CONSTRUCTION
A2	GENERAL DEVELOPMENT PLAN
A3	SECTION
A4	SECTION OF ROOM AND FINISHES
STRUCTURAL	
S1	CONSTRUCTION STANDARD DETAILS
S2	FOUNDATION PLAN AND FOUNDATION WALL SECTION
ELECTRICAL	
E1	GENERAL FLOOR LIGHTING LAYOUT
E2	GENERAL FLOOR CONDUITANCE LAYOUT
E3	COMPUTATION OF LOAD AND DETERMINATION OF PANEL SIZES AND PANEL SCHEDULE
PLUMBING	
P1	GENERAL FLOOR WATER LINE LAYOUT
P2	GENERAL FLOOR SEWER LINE LAYOUT





A  
SITE DEVELOPMENT PLAN  
1:2500M

	
<b>REPUBLIC OF THE PHILIPPINES</b> Department of Health <b>National Center for Mental Health</b> <small>Nueva de Padre Street, Barangay Maway, Mandaluyong City</small>	
PROJECT TITLE/LOCATION:	CONSTRUCTION OF PAVILION 2 OUT-PATIENT SECTION EXTENSION
PREPARED BY:	ENGINEER I. PURINO, CE, MMHCA <small>Engineer III, Chief, Planning &amp; Development Section</small>
REVIEWED:	DIONICIO A. TOLENTINO, MPA <small>Chief Finance Services, HFEP Coordinator</small>
RECOMMENDING APPROVAL:	NOEL V. RETES, MD, FPPA, MMHCA <small>Medical Center Chief II</small>
SHEET CONTENT:	PERSPECTIVE TABLE OF CONTENTS
SHEET NO.	1 A 1 4

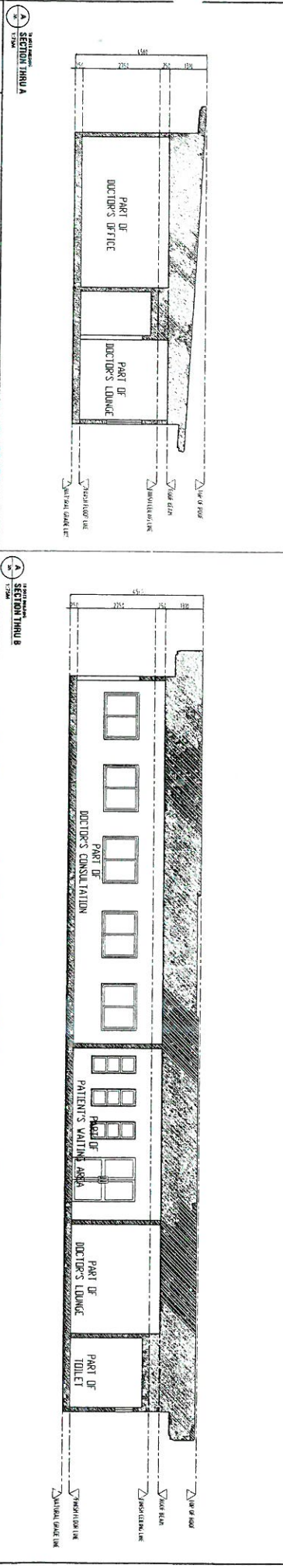
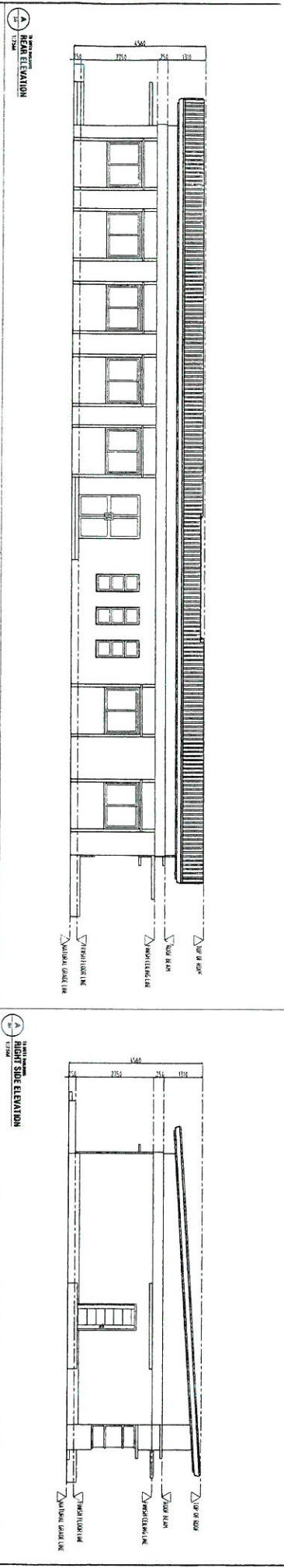
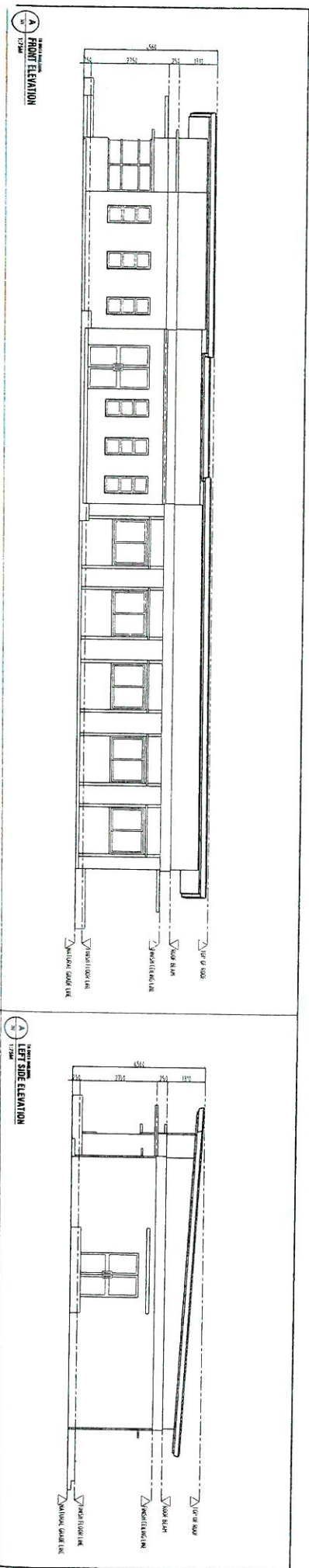




**A**  
 OPS-EXTENSION BUILDING (246.00 SQ.M)  
**PROPOSED GROUND FLOOR PLAN**  
 1:50M

FINISHES	
FLOOR	
F1	CEMENT PLASTER
F2	60X60 HOMOGENOUS FLOOR TILES
F3	60X60 NON SKID FLOOR TILES
WALL	
W1	CEMENT PLASTER IN PAINT FINISH
W2	60X60 WALL TILES
W3	CUBICLE PARTITION
CEILING	
C1	FIBER CEMENT BOARD IN PAINT FINISH
C2	6MM POLY CARBONATE ROOFING

 <b>REPUBLIC OF THE PHILIPPINES</b> Department Of Health <b>National Center for Mental Health</b> Nuave de Paderno Street, Baranggay Maunay, Mandaluyong City	<b>PROJECT TITLE/LOCATION:</b> CONSTRUCTION OF PAULINA 2 OUT-PATIENT SECTION EXTENSION	<b>PREPARED BY:</b> EVELYN T. PURINO, CE, MMHQA Engineer III, Chief, Planning & Development Section	<b>REVIEWED:</b> DOMINICO A. TOLENTINO, MPA Chief Finance Service, HFFP Coordinator	<b>RECOMMENDING APPROVAL:</b> NOEL V. REYES, MD, FPPA, MMHQA Medical Center Chief II	<b>SHEET CONTENT:</b> PROPOSED GROUND FLOOR PLAN	<b>SHEET NO.</b> 
	<p style="text-align: center;">2/11 A/2</p>					





	<b>REPUBLIC OF THE PHILIPPINES</b> Department Of Health		<b>PROJECT TITLE/LOCATION:</b> CONSTRUCTION OF PAVILION 2 OUT-PATIENT SECTION EXTENSION	
	<b>National Center for Mental Health</b> Nueva de Probero Street, Bantayog Mayway, Mandaluyong City		<b>PREPARED BY:</b> EVELYN T. PURINO, CE, MMHSA Engineer III, Chief, Planning & Development Section	
		<b>REVIEWED:</b> DONICHO A. TOLENTINO, MPA Chief Finance Services, HFEP Coordinator		<b>RECOMMENDING APPROVAL:</b> NOEL V. REYES, MD, FPPA, MMHSA Medical Center Chief II
		<b>SHEET CONTENT:</b> ELEVATION SECTION		<b>SHEET NO.</b> 



**REPUBLIC OF THE PHILIPPINES**  
 Department of Health  
**National Center for Mental Health**  
 Nueva de Pebrero Street, Barangay Malvey, Mandaluyong City

**PROJECT TITLE/LOCATION:**  
 CONSTRUCTION OF PAVILION 2 OUT-PATIENT SECTION EXTENSION

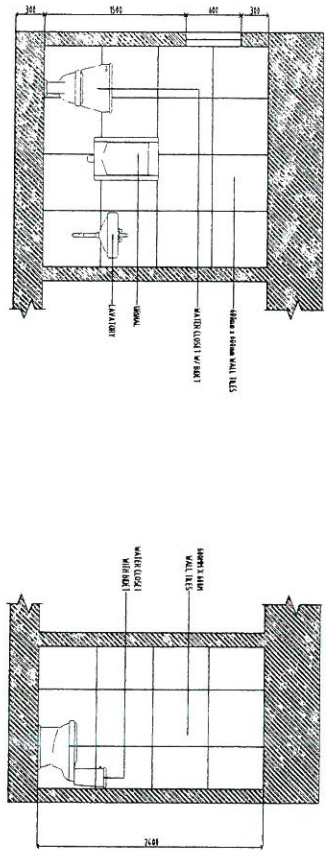
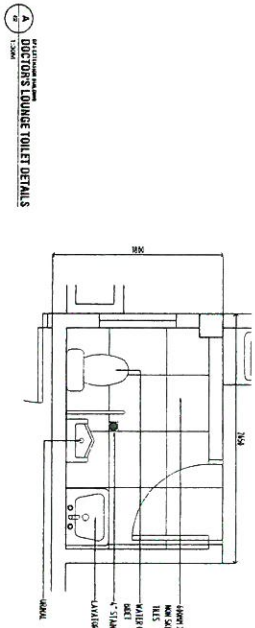
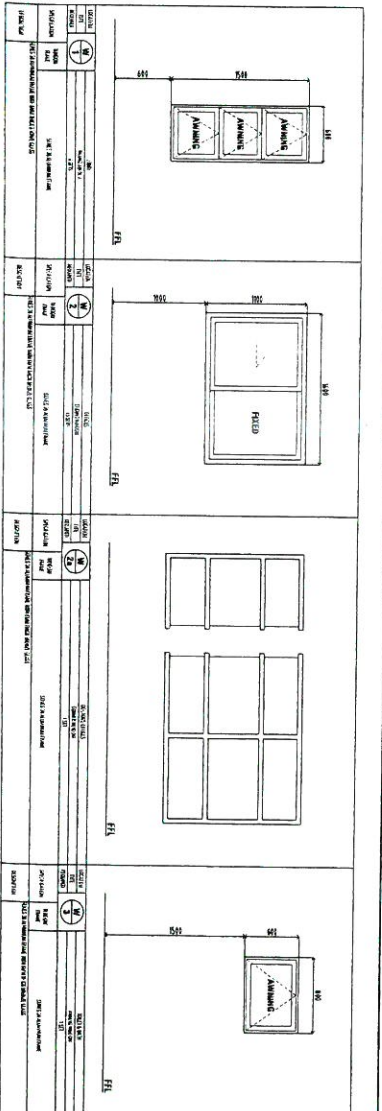
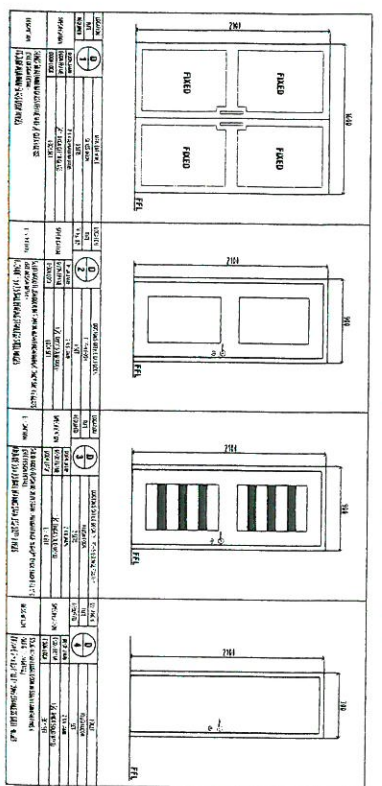
**PREPARED BY:**  
 EVELYN T. PURINO, CE, MMHQA  
 Engineer III, Chief, Planning & Development Section

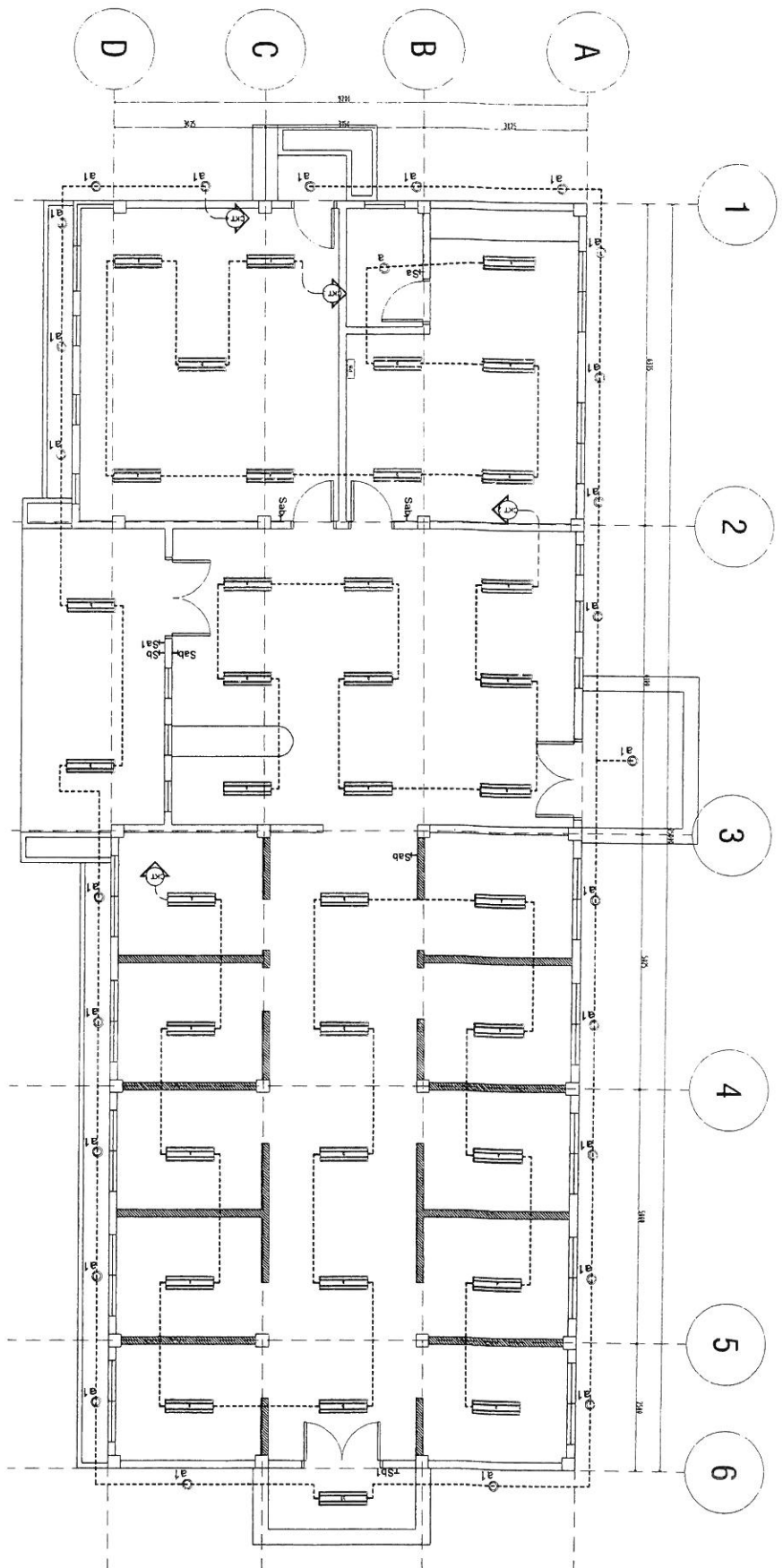
**REVIEWED:**  
 DONOCHIO A. TOLENTINO, MPA  
 Chief Finance Services, HIEEP Coordinator

**RECOMMENDING APPROVAL:**  
 NOEL V. REVES, MD, PPPA, MMHQA  
 Medical Center Chief II


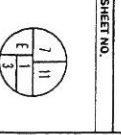
**SHEET CONTENT:**  
 SCHEDULE OF DOOR & WINDOWS DETAILS OF TOILET

**SHEET NO.**  
 4  
 11  
 4  
 4

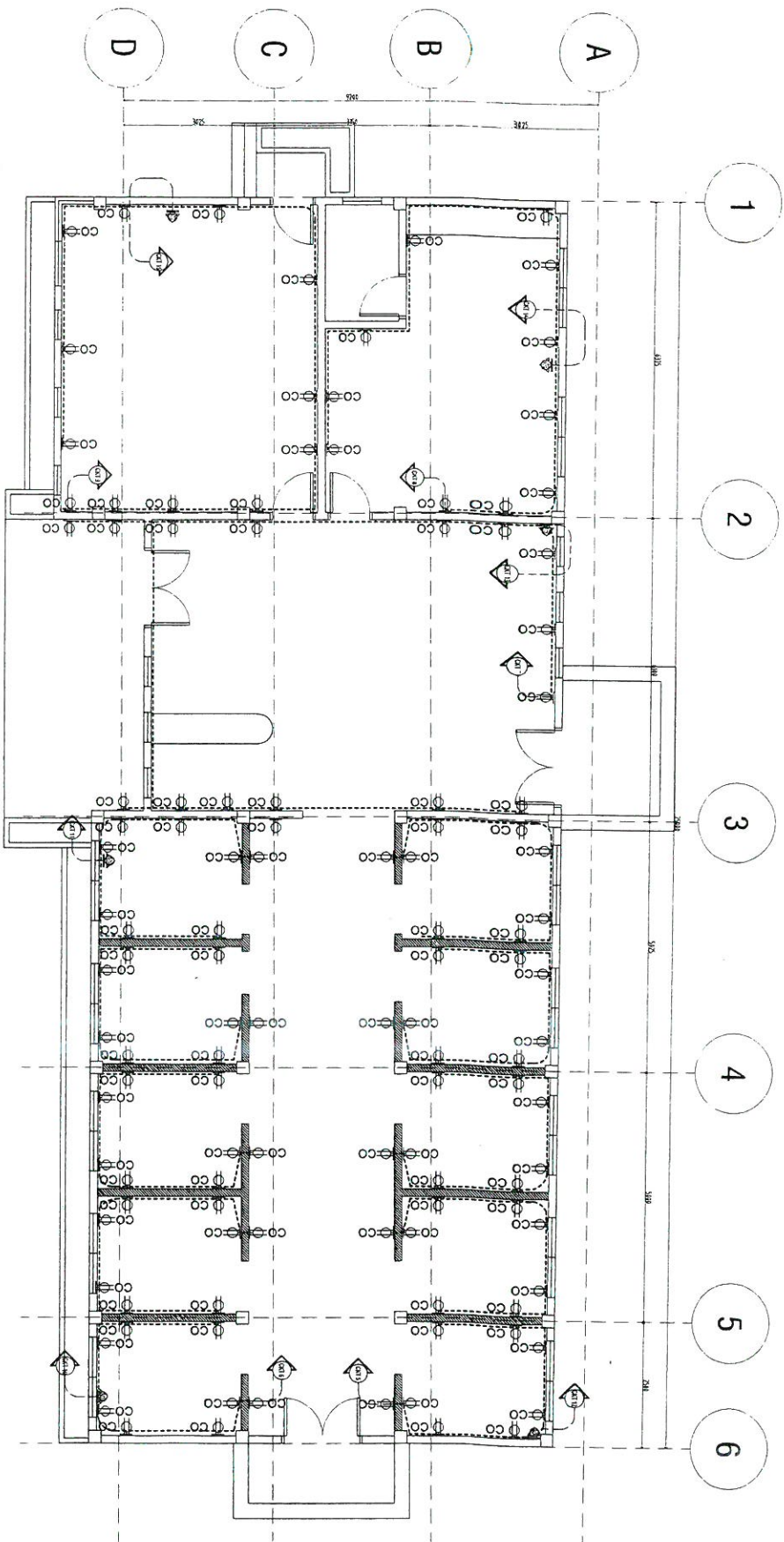





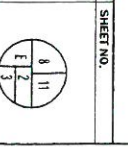
**E**  
 OPS-EXTENSION BUILDING (246.00 SQ.M)  
**PROPOSED GROUND-FLOOR LIGHTING LAY OUT**  
 1:50M

	<p>REPUBLIC OF THE PHILIPPINES          Department of Health  <b>National Center for Mental Health</b>  <small>Neve de Pabero Street, Bantayog Manway, Mandaluyong City</small></p>	<p>PROJECT TITLE/LOCATION:          CONSTRUCTION OF PAVILION 2 OUT-PATIENT SECTION EXTENSION</p>	<p>PREPARED BY:          EVELYN T. PURINO, CE, MMHSA  <small>Engineer III, Chief, Planning &amp; Development Section</small></p>	<p>REVIEWED:          DONICHO A. TOLENTINO, MPA  <small>Chief Finance Services, HEP Coordinator</small></p>	<p>RECOMMENDING APPROVAL:          NOEL V. REYES, MD, FPPA, MMHSA  <small>Medical Center Chief II</small></p>	<p>SHEET CONTENT:          PROPOSED GROUND-FLOOR LIGHTING LAY OUT</p>	<p>SHEET NO.  </p>
---	---	--	--	---	---	---	---





OPS-EXTENSION BUILDING (246.00 SQ.M)  
**E**  
 PROPOSED GROUND-FLOOR POWERLINE LAY OUT  
 1:50M

	<p>REPUBLIC OF THE PHILIPPINES          Department of Health  <b>National Center for Mental Health</b>          Nueva de Pebrero Street, Barangay Malabon, Mandaluyong City</p>	<p>PROJECT TITLE/LOCATION:          CONSTRUCTION OF PAVILION 2 OUT-PATIENT SECTION EXTENSION</p>	<p>PREPARED BY:          EVELYN T. PURINO, CE, MMHQA          Engineer III, Chief Planning &amp; Development Section</p>	<p>REVIEWED:          DIONICIO A. TOLENTINO, MPA          Chief Finance Services, HFEP Coordinator</p>	<p>RECOMMENDING APPROVAL:          NOEL V. REYES, MD, FPPA, MMHQA          Medical Center Chief II</p>	<p>SHEET CONTENT:          PROPOSED GROUND-FLOOR POWERLINE LAY OUT</p>	<p>SHEET NO.  </p>
---	---	--	--	--	--	--	---

**LOAD TABULATION AND COMPUTATION**

LOAD	QTY	WATTS	VAULTAGE (WATTS)	CIRCUIT BREAKER	WIRE SIZE	CONDUIT
1	Lighting Outlet	15	75	15	14	30 mm <sup>2</sup> PVC Pipe
2	Lighting Outlet	15	75	15	14	30 mm <sup>2</sup> PVC Pipe
3	Lighting Outlet	15	75	15	14	30 mm <sup>2</sup> PVC Pipe
4	Lighting Outlet	15	75	15	14	30 mm <sup>2</sup> PVC Pipe
5	Lighting Outlet	15	75	15	14	30 mm <sup>2</sup> PVC Pipe
6	Lighting Outlet	15	75	15	14	30 mm <sup>2</sup> PVC Pipe
7	Lighting Outlet	15	75	15	14	30 mm <sup>2</sup> PVC Pipe
8	Lighting Outlet	15	75	15	14	30 mm <sup>2</sup> PVC Pipe
9	Lighting Outlet	15	75	15	14	30 mm <sup>2</sup> PVC Pipe
10	Lighting Outlet	15	75	15	14	30 mm <sup>2</sup> PVC Pipe
11	Lighting Outlet	15	75	15	14	30 mm <sup>2</sup> PVC Pipe
12	Lighting Outlet	15	75	15	14	30 mm <sup>2</sup> PVC Pipe
13	Lighting Outlet	15	75	15	14	30 mm <sup>2</sup> PVC Pipe
14	Lighting Outlet	15	75	15	14	30 mm <sup>2</sup> PVC Pipe
15	Lighting Outlet	15	75	15	14	30 mm <sup>2</sup> PVC Pipe
16	Lighting Outlet	15	75	15	14	30 mm <sup>2</sup> PVC Pipe
17	Lighting Outlet	15	75	15	14	30 mm <sup>2</sup> PVC Pipe
18	Lighting Outlet	15	75	15	14	30 mm <sup>2</sup> PVC Pipe
19	Lighting Outlet	15	75	15	14	30 mm <sup>2</sup> PVC Pipe
20	Lighting Outlet	15	75	15	14	30 mm <sup>2</sup> PVC Pipe
21	Lighting Outlet	15	75	15	14	30 mm <sup>2</sup> PVC Pipe
22	Lighting Outlet	15	75	15	14	30 mm <sup>2</sup> PVC Pipe
23	Lighting Outlet	15	75	15	14	30 mm <sup>2</sup> PVC Pipe
24	Lighting Outlet	15	75	15	14	30 mm <sup>2</sup> PVC Pipe
25	Lighting Outlet	15	75	15	14	30 mm <sup>2</sup> PVC Pipe
26	Lighting Outlet	15	75	15	14	30 mm <sup>2</sup> PVC Pipe
27	Lighting Outlet	15	75	15	14	30 mm <sup>2</sup> PVC Pipe
28	Lighting Outlet	15	75	15	14	30 mm <sup>2</sup> PVC Pipe
29	Lighting Outlet	15	75	15	14	30 mm <sup>2</sup> PVC Pipe
30	Lighting Outlet	15	75	15	14	30 mm <sup>2</sup> PVC Pipe
31	Lighting Outlet	15	75	15	14	30 mm <sup>2</sup> PVC Pipe
32	Lighting Outlet	15	75	15	14	30 mm <sup>2</sup> PVC Pipe
33	Lighting Outlet	15	75	15	14	30 mm <sup>2</sup> PVC Pipe
34	Lighting Outlet	15	75	15	14	30 mm <sup>2</sup> PVC Pipe
35	Lighting Outlet	15	75	15	14	30 mm <sup>2</sup> PVC Pipe
36	Lighting Outlet	15	75	15	14	30 mm <sup>2</sup> PVC Pipe
37	Lighting Outlet	15	75	15	14	30 mm <sup>2</sup> PVC Pipe
38	Lighting Outlet	15	75	15	14	30 mm <sup>2</sup> PVC Pipe
39	Lighting Outlet	15	75	15	14	30 mm <sup>2</sup> PVC Pipe
40	Lighting Outlet	15	75	15	14	30 mm <sup>2</sup> PVC Pipe
41	Lighting Outlet	15	75	15	14	30 mm <sup>2</sup> PVC Pipe
42	Lighting Outlet	15	75	15	14	30 mm <sup>2</sup> PVC Pipe
43	Lighting Outlet	15	75	15	14	30 mm <sup>2</sup> PVC Pipe
44	Lighting Outlet	15	75	15	14	30 mm <sup>2</sup> PVC Pipe
45	Lighting Outlet	15	75	15	14	30 mm <sup>2</sup> PVC Pipe
46	Lighting Outlet	15	75	15	14	30 mm <sup>2</sup> PVC Pipe
47	Lighting Outlet	15	75	15	14	30 mm <sup>2</sup> PVC Pipe
48	Lighting Outlet	15	75	15	14	30 mm <sup>2</sup> PVC Pipe
49	Lighting Outlet	15	75	15	14	30 mm <sup>2</sup> PVC Pipe
50	Lighting Outlet	15	75	15	14	30 mm <sup>2</sup> PVC Pipe
51	Lighting Outlet	15	75	15	14	30 mm <sup>2</sup> PVC Pipe
52	Lighting Outlet	15	75	15	14	30 mm <sup>2</sup> PVC Pipe
53	Lighting Outlet	15	75	15	14	30 mm <sup>2</sup> PVC Pipe
54	Lighting Outlet	15	75	15	14	30 mm <sup>2</sup> PVC Pipe
55	Lighting Outlet	15	75	15	14	30 mm <sup>2</sup> PVC Pipe
56	Lighting Outlet	15	75	15	14	30 mm <sup>2</sup> PVC Pipe
57	Lighting Outlet	15	75	15	14	30 mm <sup>2</sup> PVC Pipe
58	Lighting Outlet	15	75	15	14	30 mm <sup>2</sup> PVC Pipe
59	Lighting Outlet	15	75	15	14	30 mm <sup>2</sup> PVC Pipe
60	Lighting Outlet	15	75	15	14	30 mm <sup>2</sup> PVC Pipe
61	Lighting Outlet	15	75	15	14	30 mm <sup>2</sup> PVC Pipe
62	Lighting Outlet	15	75	15	14	30 mm <sup>2</sup> PVC Pipe
63	Lighting Outlet	15	75	15	14	30 mm <sup>2</sup> PVC Pipe
64	Lighting Outlet	15	75	15	14	30 mm <sup>2</sup> PVC Pipe
65	Lighting Outlet	15	75	15	14	30 mm <sup>2</sup> PVC Pipe
66	Lighting Outlet	15	75	15	14	30 mm <sup>2</sup> PVC Pipe
67	Lighting Outlet	15	75	15	14	30 mm <sup>2</sup> PVC Pipe
68	Lighting Outlet	15	75	15	14	30 mm <sup>2</sup> PVC Pipe
69	Lighting Outlet	15	75	15	14	30 mm <sup>2</sup> PVC Pipe
70	Lighting Outlet	15	75	15	14	30 mm <sup>2</sup> PVC Pipe
71	Lighting Outlet	15	75	15	14	30 mm <sup>2</sup> PVC Pipe
72	Lighting Outlet	15	75	15	14	30 mm <sup>2</sup> PVC Pipe
73	Lighting Outlet	15	75	15	14	30 mm <sup>2</sup> PVC Pipe
74	Lighting Outlet	15	75	15	14	30 mm <sup>2</sup> PVC Pipe
75	Lighting Outlet	15	75	15	14	30 mm <sup>2</sup> PVC Pipe
76	Lighting Outlet	15	75	15	14	30 mm <sup>2</sup> PVC Pipe
77	Lighting Outlet	15	75	15	14	30 mm <sup>2</sup> PVC Pipe
78	Lighting Outlet	15	75	15	14	30 mm <sup>2</sup> PVC Pipe
79	Lighting Outlet	15	75	15	14	30 mm <sup>2</sup> PVC Pipe
80	Lighting Outlet	15	75	15	14	30 mm <sup>2</sup> PVC Pipe
81	Lighting Outlet	15	75	15	14	30 mm <sup>2</sup> PVC Pipe
82	Lighting Outlet	15	75	15	14	30 mm <sup>2</sup> PVC Pipe
83	Lighting Outlet	15	75	15	14	30 mm <sup>2</sup> PVC Pipe
84	Lighting Outlet	15	75	15	14	30 mm <sup>2</sup> PVC Pipe
85	Lighting Outlet	15	75	15	14	30 mm <sup>2</sup> PVC Pipe
86	Lighting Outlet	15	75	15	14	30 mm <sup>2</sup> PVC Pipe
87	Lighting Outlet	15	75	15	14	30 mm <sup>2</sup> PVC Pipe
88	Lighting Outlet	15	75	15	14	30 mm <sup>2</sup> PVC Pipe
89	Lighting Outlet	15	75	15	14	30 mm <sup>2</sup> PVC Pipe
90	Lighting Outlet	15	75	15	14	30 mm <sup>2</sup> PVC Pipe
91	Lighting Outlet	15	75	15	14	30 mm <sup>2</sup> PVC Pipe
92	Lighting Outlet	15	75	15	14	30 mm <sup>2</sup> PVC Pipe
93	Lighting Outlet	15	75	15	14	30 mm <sup>2</sup> PVC Pipe
94	Lighting Outlet	15	75	15	14	30 mm <sup>2</sup> PVC Pipe
95	Lighting Outlet	15	75	15	14	30 mm <sup>2</sup> PVC Pipe
96	Lighting Outlet	15	75	15	14	30 mm <sup>2</sup> PVC Pipe
97	Lighting Outlet	15	75	15	14	30 mm <sup>2</sup> PVC Pipe
98	Lighting Outlet	15	75	15	14	30 mm <sup>2</sup> PVC Pipe
99	Lighting Outlet	15	75	15	14	30 mm <sup>2</sup> PVC Pipe
100	Lighting Outlet	15	75	15	14	30 mm <sup>2</sup> PVC Pipe
TOTAL		3672	3672	3672	3672	

DATE: 11/15/2017  
 TIME: 10:00 AM  
 PROJECT: 301/17-000-02-001  
 CLIENT: 301/17-000-02-001  
 DRAWING NO.: 301/17-000-02-001-001  
 SCALE: 1:1  
 DRAWN BY: [Signature]  
 CHECKED BY: [Signature]  
 APPROVED BY: [Signature]

**UP'S - EXTENSION BUILDING  
 LOAD TABULATION & COMPUTATION**



**REPUBLIC OF THE PHILIPPINES**  
 Department of Health  
**National Center for Mental Health**  
 Nueva de Fabros Street, Barangay Malabar, Mandalaung City

**PROJECT TITLE/LOCATION:**  
 CONSTRUCTION OF PAVILION 2 OUT-PATIENT  
 SECTION EXTENSION

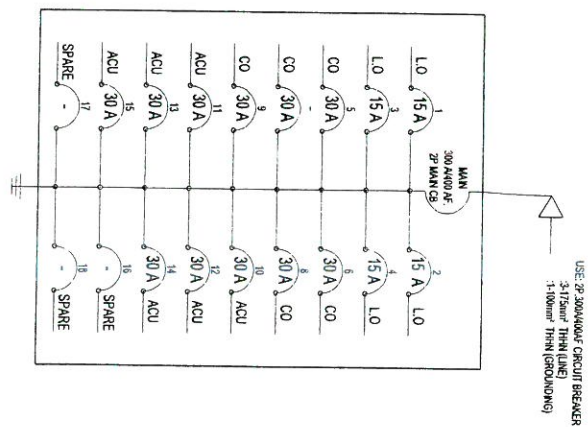
**PREPARED BY:**  
 EVELYN T. PURINO, CE, MMHQA  
 Engineer III, Chief, Planning & Development Section

**REVIEWED:**  
 DONICHO A. TOLENTINO, MPA  
 Chief Finance Service, HFEP Coordinator

**RECOMMENDING APPROVAL:**  
 NOEL V. REYES, MD, FPPA, MMHQA  
 Medical Center Chief II

**SHEET CONTENT:**  
 PANEL BOARD LOAD TABULATION &  
 COMPUTATION  
 PANEL BOARD SINGLE LINE DIAGRAM

**SHEET NO.:**  
 9  
 11  
 3





REPUBLIC OF THE PHILIPPINES  
Department of Health  
**National Center for Mental Health**  
Nueva de Pebrero Street, Barangay Marikina, Marikina City

PROJECT TITLE/LOCATION:  
CONSTRUCTION OF PAVILION 2 OUT-PATIENT SECTION EXTENSION

PREPARED BY:  
EVELYN T. PURINO, CE, MMHA  
Engineer III, Chief, Planning & Development Section

REVIEWED:  
DOMINIC A. TOLENTINO, MPA  
Chief Finance Services, HFEP Coordinator

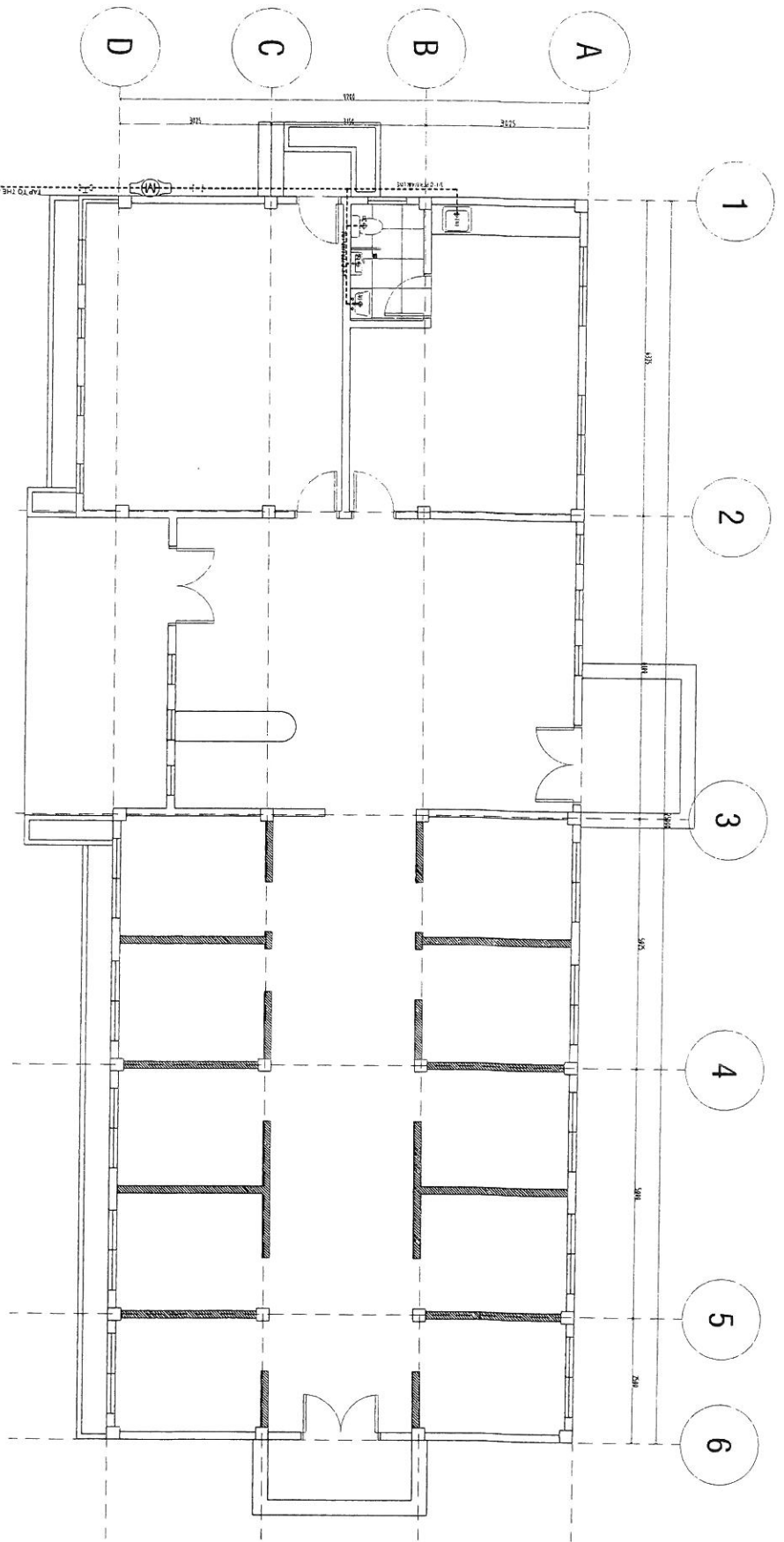
RECOMMENDING APPROVAL:  
NOEL V. REYES, MD, FPPA, MMHA  
Medical Center Chief II

SHEET CONTENT:  
PROPOSED GROUND FLOOR WATERLINE LAY OUT

SHEET NO.  
10 | 11  
P | 3

**P**  
OPS-EXTENSION BUILDING (246.00 SQ.M)  
**PROPOSED GROUND FLOOR WATERLINE LAY OUT**  
1:50M

- LEGEND:
- 110mmØ SSP SOIL STACK PIPE
  - 100mmØ WC WATER CLOSET
  - 110mmØ CO CLEAN OUT
  - 75mmØ FD FLOOR DRAIN
  - 50mmØ LAV LAVATORY
  - DRAINAGE MAIN LINE
  - SEWER MAIN LINE
  - WATER MAIN LINE







REPUBLIC OF THE PHILIPPINES  
Department of Health  
**National Center for Mental Health**  
Nuova de Paredes Street, Barangay Muntin, Mandaluyong City

PROJECT TITLE/LOCATION:  
CONSTRUCTION OF PHALAN 2 OUT-PATIENT SECTION EXTENSION

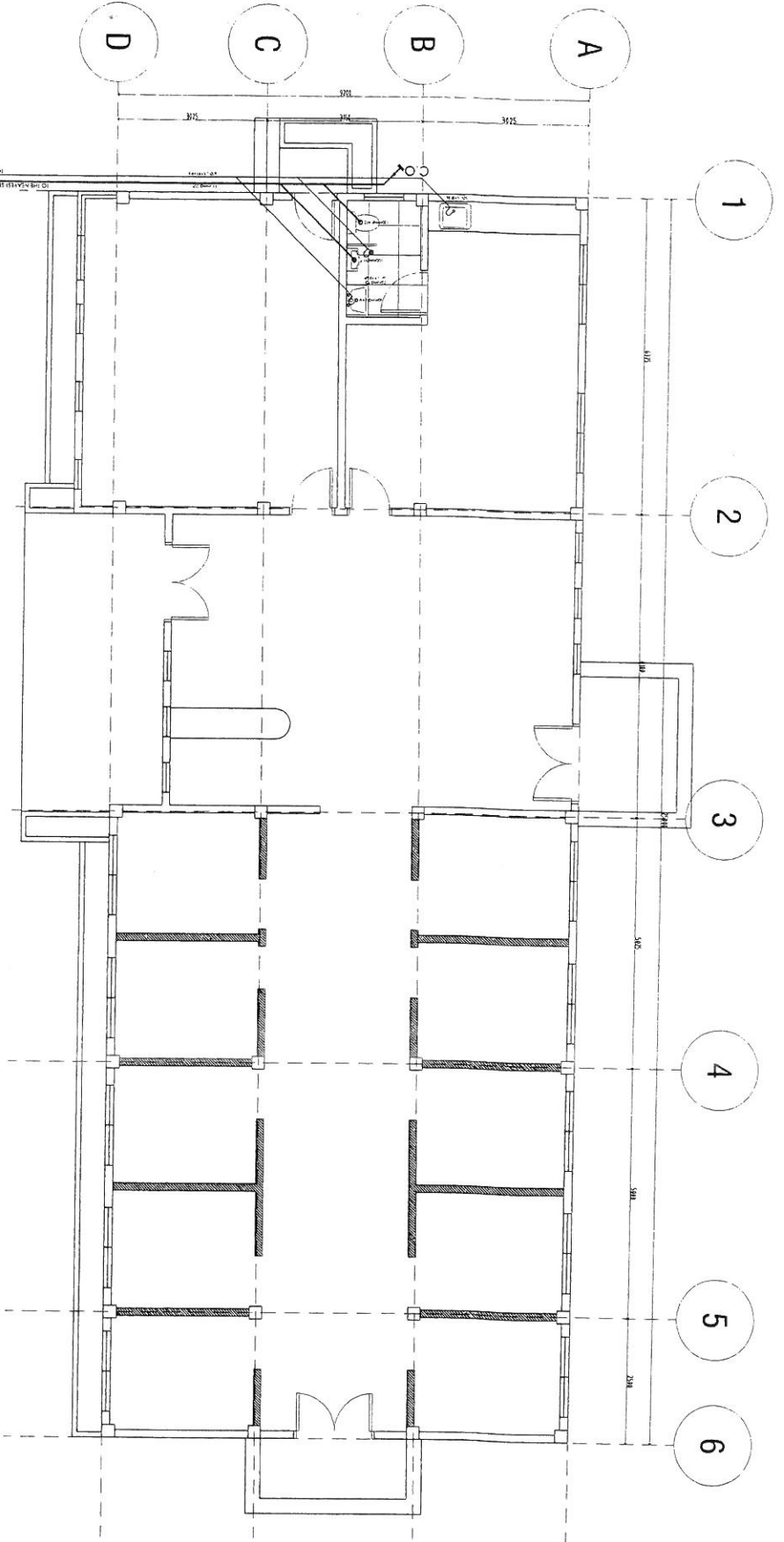
PREPARED BY:  
EVELYN T. PURING, CE, MMHQA  
Engineer III, Chief, Planning & Development Section

REVIEWED:  
DIONICIO A. TOLENTINO, MPA  
Chief Finance Service, HEPF, Coordinator

RECOMMENDING APPROVAL:  
NOEL V. REVES, MD, FPPA, MMHQA  
Medical Center Chief II

SHEET CONTENT:  
PROPOSED GROUND-FLOOR SEWERLINE LAY OUT

SHEET NO.  
11 11  
P 7  
2



**P**  
201  
1:50M  
OPS-EXTENSION BUILDING (246.00 SQ.M)  
**PROPOSED GROUND-FLOOR SEWERLINE LAY OUT**

- LEGEND:
- 110mmØ SSP SOIL STACK PIPE
  - 100mmØ WC WATER CLOSET
  - 110mmØ CO CLEAN OUT
  - 75mmØ FD FLOOR DRAIN
  - 50mmØ LAV LAVATORY
  - DRAINAGE MAIN LINE
  - SEWER MAIN LINE
  - WATER MAIN LINE

# GENERAL STRUCTURAL NOTES

IBC 1907, STRUCTURAL ENGINEERING DESIGN PROVISION  
STRUCTURAL DESIGN DATA AND SPECIFICATIONS FOR CASTLE, 5th EDITION

### MATERIALS

- UNLESS INDICATED OTHERWISE ON PLANS, THE CONCRETE CLASS AND STRENGTH SHALL BE AS FOLLOWS:

STRUCTURAL ELEMENTS	CLASS	30 DAY COMPRESSIVE STRENGTH (MPa/ksi)	MAXIMUM SLUMP (mm/IN)
SLAB STAIR CURBS AND SLAB ON GRADE	"X"	20.7 (3000/25)	75 (3")
CAST-IN-PLACE GIRDERS, BEAMS, FLOOR JOISTS AND COLUMNS	"X-1"	27.6 (4000/35)	100 (4")
OTHER STRUCTURAL ELEMENTS FOR NON-STRUCTURAL MEMBERS	"X"	20.7 (3000/25)	100 (4")
LEAN CONCRETE		17.2 (2500/20)	75 (3")

ITEMS	AGGREGATE SIZE
FOOTINGS	25MM (1")
SLAB BEAMS COLUMNS OTHERS	19MM (3/4")

### REINFORCING STEEL

- REINFORCING STEEL SHALL CONFORM TO LATEST EDITIONS OF ASTM A618 GRADE 60 (420MPa) AND ASTM A618 GRADE 40 (276MPa) (6000 PSI) OR EQUIVALENT UNLESS OTHERWISE SPECIFIED IN THE DRAWINGS.

### STRUCTURAL STEEL BOLTS/WELDS

MATERIAL	SPECIFICATIONS
STEEL PLATES AND ROLLED SHAPES	ASTM A572
BOLTS	ASTM A508
WELDS	AWS D11.1-18A E70XX SERIES

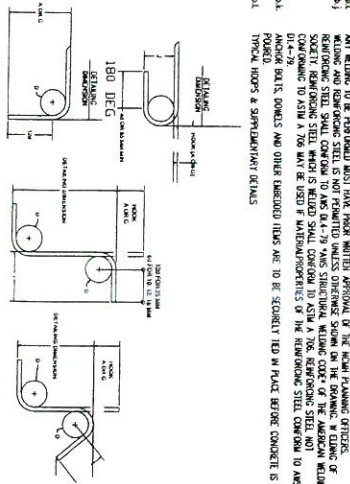
### CONSTRUCTION

- SETTING OUT

- REINFORCED CONCRETE

- CONCRETE MIX AND FINISH

REINFORCING STEEL		REINFORCING STEEL	
BAR SIZE	MINIMUM YIELD STRENGTH (MPa/ksi)	MINIMUM TENSILE STRENGTH (MPa/ksi)	MINIMUM ELONGATION (%)
16	420	550	16
18	420	550	16
20	420	550	16
22	420	550	16
25	420	550	16
28	420	550	16
32	420	550	16
36	420	550	16
40	420	550	16
45	420	550	16
50	420	550	16
55	420	550	16
60	420	550	16
65	420	550	16
70	420	550	16
75	420	550	16
80	420	550	16
85	420	550	16
90	420	550	16
95	420	550	16
100	420	550	16
105	420	550	16
110	420	550	16
115	420	550	16
120	420	550	16
125	420	550	16
130	420	550	16
135	420	550	16
140	420	550	16
145	420	550	16
150	420	550	16
155	420	550	16
160	420	550	16
165	420	550	16
170	420	550	16
175	420	550	16
180	420	550	16
185	420	550	16
190	420	550	16
195	420	550	16
200	420	550	16



### STANDARD HOOKS STIRRUPS AND TIE-HOOKS

ANGLE	STIRRUP AND TIE-HOOKS		
	MINIMUM YIELD STRENGTH (MPa/ksi)	MINIMUM TENSILE STRENGTH (MPa/ksi)	MINIMUM ELONGATION (%)
90 DEG	420	550	16
135 DEG	420	550	16

### GENERAL STRUCTURAL NOTES

- GENERAL NOTES AND TYPICAL STRUCTURAL DETAILS SHALL APPLY TO ALL DRAWINGS.
- CONCRETE SHALL BE PLACED AND CURED IN ACCORDANCE WITH THE PROVISIONS OF THE DESIGN CODE AND THE PROVISIONS OF THE DESIGN CODE FOR REINFORCED CONCRETE.
- PLANNING OFFICERS (ENGINEERS/ARCHITECTS) OF ANY DISCREPANCIES, THEY MAY FIND IT SHOULD BE THE CONTRACTOR'S RESPONSIBILITY TO PROVIDE ADEQUATE SHORING AND BRACING FOR THE STRUCTURE FOR ALL LOADS THAT MAY BE IMPOSED DURING CONSTRUCTION.
- STANDARDS AND WORKMANSHIP SHALL CONFORM TO THE LATEST APPLICABLE PRACTICE PREVALENT IN THE VARIOUS TRADE.
- ALL CONSTRUCTION AND WORKMANSHIP SHALL BE SUBJECT TO INSPECTION, EXAMINATION AND TESTING BY THE ENGINEER/ARCHITECT. THE ENGINEER/ARCHITECT SHALL HAVE THE RIGHT TO REFUSE TO ACCEPT THE MATERIALS UNLESS SPECIFICALLY DETAINED OTHERWISE. THE CONTRACTOR SHALL FOLLOW TYPICAL DETAILS AS SHOWN IN THESE DRAWINGS.
- THE CONTRACTOR SHALL BE RESPONSIBLE FOR THE COORDINATION OF WORK ANDING WORKS AND NECESSARY TO ADD DETAILS AND TO ENSURE THE COORDINATION OF ALL WORKS WITH AVAILABLE SPACE.
- RECORDS SHALL BE KEPT AND MAINTAINED THROUGHOUT THE PERIOD OF CONSTRUCTION AND SHALL BE SUBJECT TO INSPECTION BY THE ENGINEER/ARCHITECT. RECORDS SHALL BE KEPT AND MAINTAINED THROUGHOUT THE PERIOD OF CONSTRUCTION AND SHALL BE SUBJECT TO INSPECTION BY THE ENGINEER/ARCHITECT.
- CONTRACTOR TO PROVIDE ONE EIGHTH INCH BRASSIC TESTING RESULT TO CLIENT. THESE TESTS SHALL BE CONDUCTED BY ACCREDITED TESTING.
- IN CASE OF STRUCTURAL MEMBERS SPECIFIED ARE NOT AVAILABLE, SUBMIT TO CLIENT FOR APPROVAL LIST OF MEMBERS FOR APPROVAL BEFORE PURCHASE.

**REPUBLIC OF THE PHILIPPINES**  
Department of Health

**National Center for Mental Health**

Newse de Padreos Street, Barangay Malabar, Mandaluyong City

PROJECT TITLE/LOCATION:	REVIEWED:	RECOMMENDING APPROVAL:
COMPLETION OF PAVILION 2 OUT-EXTENSION	EVELYN T. PURINO, CE, MHMHA SAO, Chief, Planning and Development Section	DIONICIO A. TOLENTINO, MPA Chief Finance Services, HREB Coordinator
		NOEL V. NERES, MD, MPH, MHMHA Medical Center Chief II

SHEET NO.:	GENERAL STRUCTURAL NOTES	SHEET NO.
2 4	S T 1 3	2 4





REPUBLIC OF THE PHILIPPINES  
Department of Health  
**National Center for Mental Health**  
Nueva de Pedro Street, Barangay Nuweg, Mandaluyong City

PROJECT TITLE/LOCATION:  
COMPLETION OF  
PAVILION 2 OUT -  
PATIENT SECTION  
EXTENSION

REVIEWER:  
EVELYN T. PURINO, CE, MMHQA  
SAC, Chief, Planning and Development Section

RECOMMENDING APPROVAL:  
DIONICIO A. TOLENTINO, MPA  
Chief Finance Service, HRP Coordinator

APPROVED:  
NOEL V. RETES, MD, FPPA, MMHQA  
Medical Center Chief II

SHEET NO.

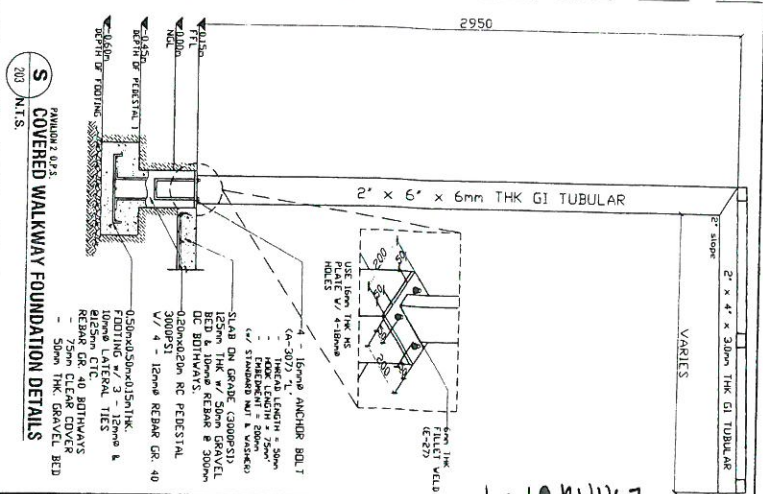
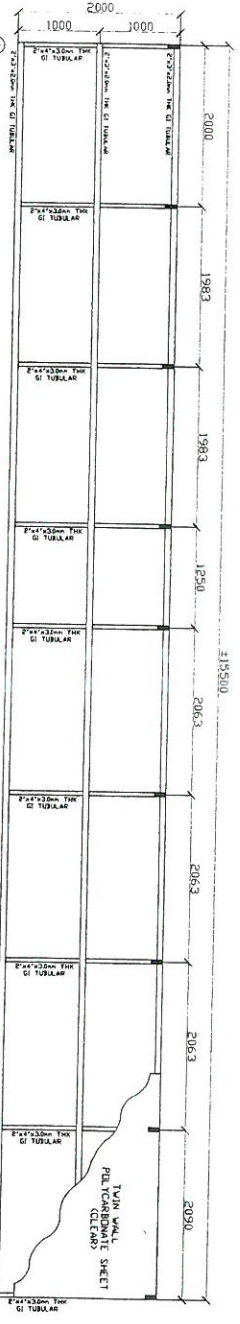
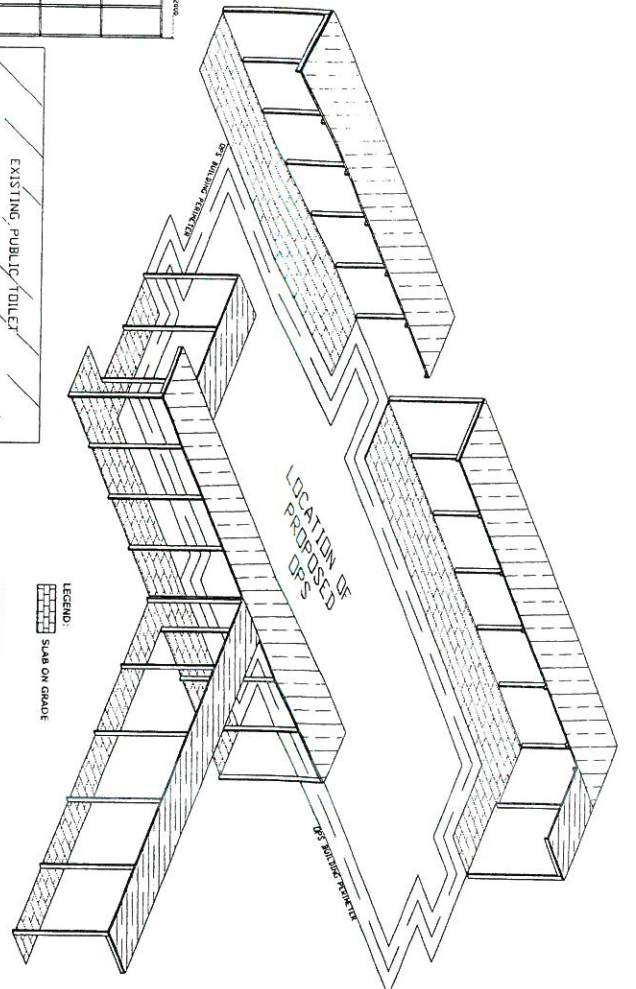
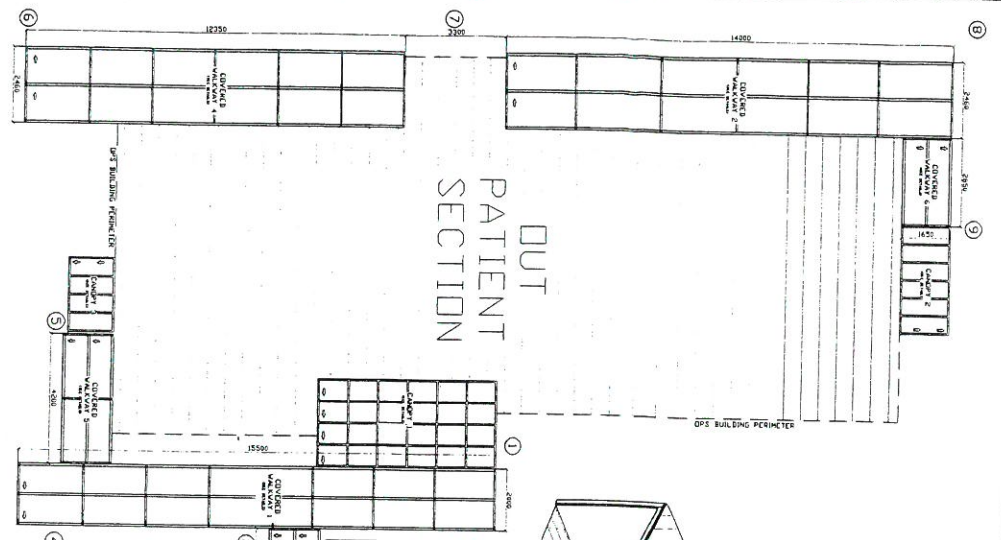
COVERED WALKWAY PLAN VIEW  
COVERED WALKWAY ISOMETRIC VIEW  
COVERED WALKWAY FOUNDATION DETAILS  
COVERED WALKWAY 1 DETAILS

3 4  
S 2  
3

PHILIPPINE D.O.S.  
201  
S COVERED WALKWAY PLAN VIEW  
1/100 MTS.

PHILIPPINE D.O.S.  
204  
S COVERED WALKWAY 1 DETAILS  
1/1.55 MTS.

PHILIPPINE D.O.S.  
203  
S COVERED WALKWAY FOUNDATION DETAILS  
203 MTS.



LEGEND:  
Slab on Grade

Enlita 0104





**National Center for Mental Health**

Nueva de Palero Street, Barangay Mauway, Mandaluyong City

REPUBLIC OF THE PHILIPPINES  
Department of Health

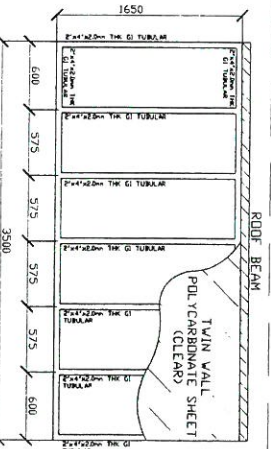
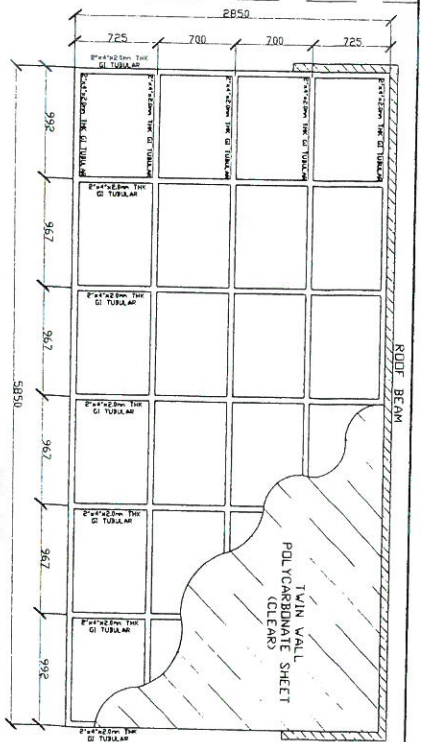
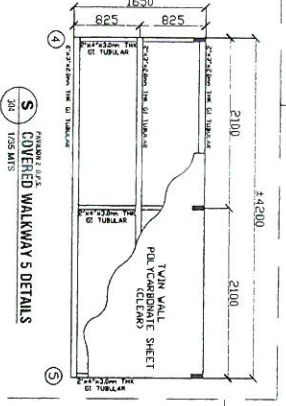
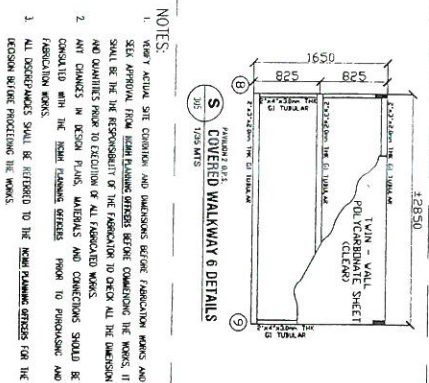
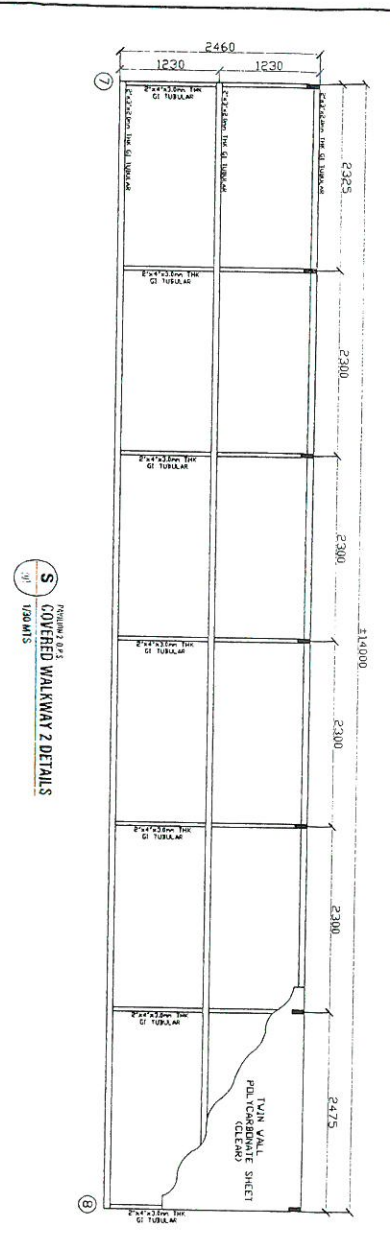
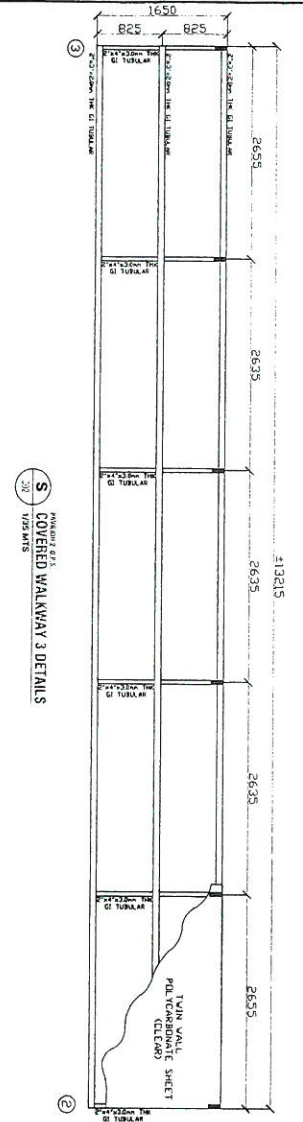
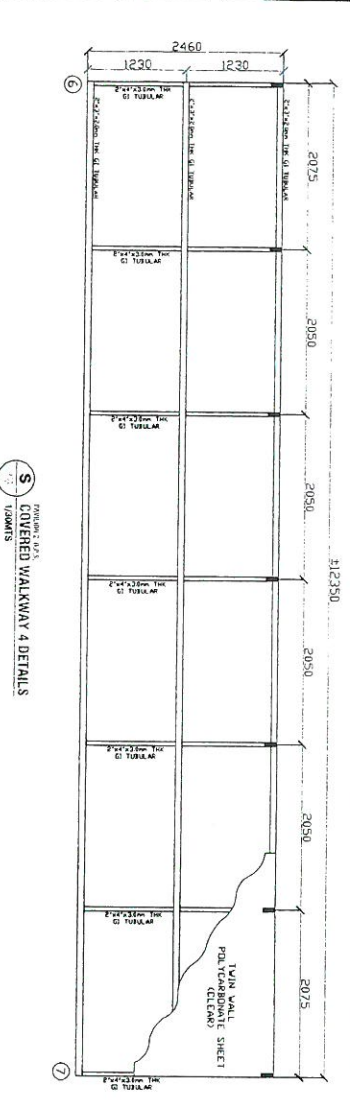
COMPLETION OF  
PAVILION 2 OUT -  
PATIENT SECTION  
EXTENSION

REVIEWED:  
EVELYN I. PURINO, CE, MMHCA  
S&O, Chief Planning and Development Section

RECOMMENDING APPROVAL:  
DONICHO A. TOLENTINO, MPA  
Chief Finance Services, HREP Coordinator

APPROVED:  
NOEL V. REYES, MD, FPPA, MMHCA  
Medical Center Chief II

SHEET NO.	SHEET CONTENT:
4	COVERED WALKWAY 2, 3, 4, 5 & 6
4	DETAILS
3	CANOPY 1, 2 & 3 DETAILS



**NOTES:**  
1. VERIFY ACTUAL SITE CONDITION AND DIMENSIONS BEFORE FABRICATION BEGINS AND SEEK APPROVAL FROM LEAD PLANNING OFFICERS BEFORE COMMENCING THE WORKS. IT SHALL BE THE RESPONSIBILITY OF THE FABRICATOR TO CHECK ALL THE DIMENSION AND QUANTITIES PRIOR TO EXECUTION OF ALL FABRICATED WORKS.  
2. ANY CHANGES IN DESIGN PLANS, MATERIALS AND CONNECTIONS SHOULD BE CONSULTED WITH THE LEAD PLANNING OFFICERS PRIOR TO FABRICATING AND FABRICATING WORKS.  
3. ALL DIMENSIONS SHALL BE REFERRED TO THE NEAREST MILLIMETERS FOR THE DECISION BEFORE PROCEEDING THE WORKS.



REPUBLIC OF THE PHILIPPINES  
Department of Health  
National Center for Mental Health

Nueve de Febrero Street, Barangay Malibyo, Mandaluyong City

PROJECT TITLE/LOCATION:  
COMPLETION OF PAWILION 2 OUT-PATIENT SECTION EXTENSION

PREPARED BY:  
EVELYN T. PURINO, CE, MMHQA  
SAO, Chief, Planning & Development Section

REVIEWED:  
DIONICIO A. TOLENTINO, MPA  
Chief Finance Services, HFSP Coordinator

RECOMMENDING APPROVAL:  
NOEL V. REVES, MD, PPFA, MMHQA  
Medical Center Chief II

SHEET CONTENT:  
AS SHOWN

SHEET NO.  
2 | 11

**A** LOCATION OF CCTV, MANUAL CALL POINT, FIRE ALARM BELL AND IP PHONES  
1:50M

SYMBOL	LEGEND
	CCTV CAMERA
	MANUAL CALL POINT & FIRE ALARM BELL
	IP PHONES

