



REPUBLIC OF THE PHILIPPINES
Department of Health

NATIONAL CENTER FOR MENTAL HEALTH



June 03, 2025

NOTICE OF AWARD

OEM INDUSTRIAL PARTS AND CONSTRUCTION SERVICES CORPORATION

878 Unit B Himlayan Road, Pasong Tamo, Quezon City
Tel. No.: 8642-8275 / 0906-506-5271
Email: fernando.desamito@oicscs.com.ph

Dear Sir/Madam,

Please be advised that a **Negotiated Procurement- Small Value Procurement** is used as **Alternative Method of Procurement** by the National Center for Mental Health for the **Procurement for the Supply, Erection / Installation, Testing, and Commissioning of Two (2) Units of 40 Ft. and One (1) Unit Of 25 Ft. Concrete Electrical Poles at Various Place in NCMH CY 2025 (LOT)** and is hereby **awarded** to your company the following:

No.	Qty.	UOM	Item Specifications / Description	Unit Price	Total Price
1	2	unit	40 ft. concrete electrical poles	₱148,400.00	₱296,800.00
2	1	unit	25 ft. concrete electrical poles	₱126,560.00	₱126,560.00
TOTAL					₱423,360.00

TERMS OF REFERENCE

I. PROJECT TITLE:

Replacement of Two (2) Units 40ft. and One (1) Unit 25ft. Concrete Electrical Poles at NCMH

II. CONTRACT DURATION:

Thirty (30) Calendar Days

III. MINIMUM MATERIAL SPECIFICATIONS:

The supplier must provide the Procuring Entity the minimum material specifications for the project:

1. Two (2) Units of 40ft. Concrete Electrical Poles (*See Annex A*)
2. One (1) Unit of 25ft. Concrete Electrical Poles (*See Annex B*)
3. Other consumables materials/supplies

IV. SCOPE OF WORKS:

The supplier shall render various technical and civil works such as, but not limited to:

1. Mobilization.

"There is no Health without Mental Health"



2. Coordination with NCMH-FEMS Personnel for the exact location and power interruption.
3. Digging of soil for two (2) 40-footer and one (1) 25-footer concrete posts.
4. Supply, delivery, and erection of the three (3) units concrete posts.
5. Retiring/Pull-out of three (3) dilapidated wooden poles, disconnect all primary and secondary wiring attachment, including insulators, and transfer to new concrete poles.
6. Supply and installation of other consumable materials to complete the project.
7. Termination, testing and commissioning
8. Clearing of working area.
9. Demobilization.

V. REQUIRED MANPOWER:

The supplier must provide the Procuring Entity with the necessary manpower for the project such as, but not limited to:

1. **Project Supervisor (Preferably Electrical Engineer):** Overall in charge on site. Responsible for coordination and communication. Ensures strict compliance with safety requirements and procedures. Conducts quality control inspections and documentation. Ensures that the project is within schedule and budget.
2. **Safety Officer:** Creates risk and hazard assessment before project commencement. Ensures overall safety procedures are being followed.
3. **Electricians:** Perform general electrical works.
4. **Laborers:** Perform general labor works.

VI. WARRANTY:

The project warranty shall be one (1) year after the project completion.

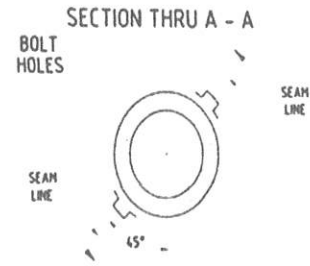
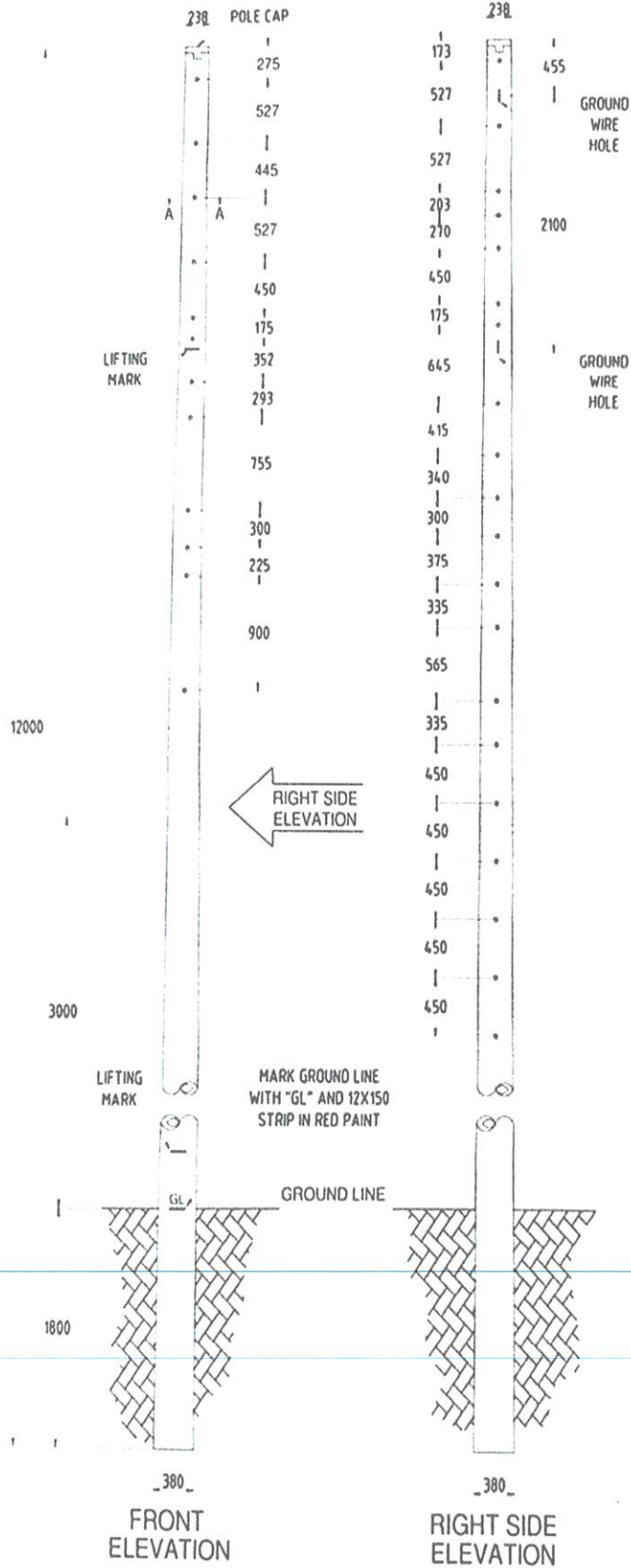
VII. OTHER TERMS AND CONDITIONS:

The following other terms and conditions of the project shall be applied:

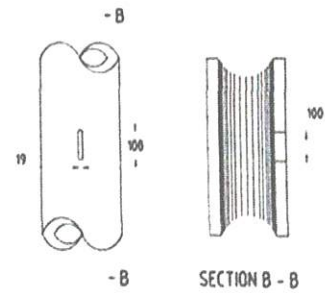
1. No payment shall be made until project completion / No downpayment. Progress payment can be made, provided, that the amount to be paid corresponds to the cost of the delivered items and/or services.
2. The project cost bided by the supplier shall be final. No additional costs shall be made. All provisional sum and contingency costs should be incorporated to the supplier's bid.
3. The supplier shall have the capacity to work on weekends (Saturday & Sunday).
4. The supplier shall provide necessary coordination with the MERALCO, if applicable.
5. The supplier shall provide aftersales service for one (1) month. On-call personnel from the supplier should be available within four (4) hours in case of troubleshoot and emergency referrals.
6. The supplier shall be held liable for any violations and penalties that may arise during the Contract period.

ANNEX A.

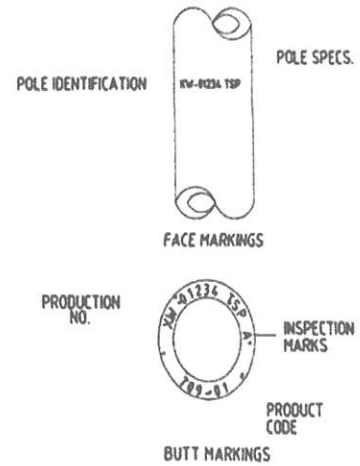
40 ft. Concrete Electrical Poles



GROUND WIRE HOLE DETAILS



POLE MARKING DETAILS

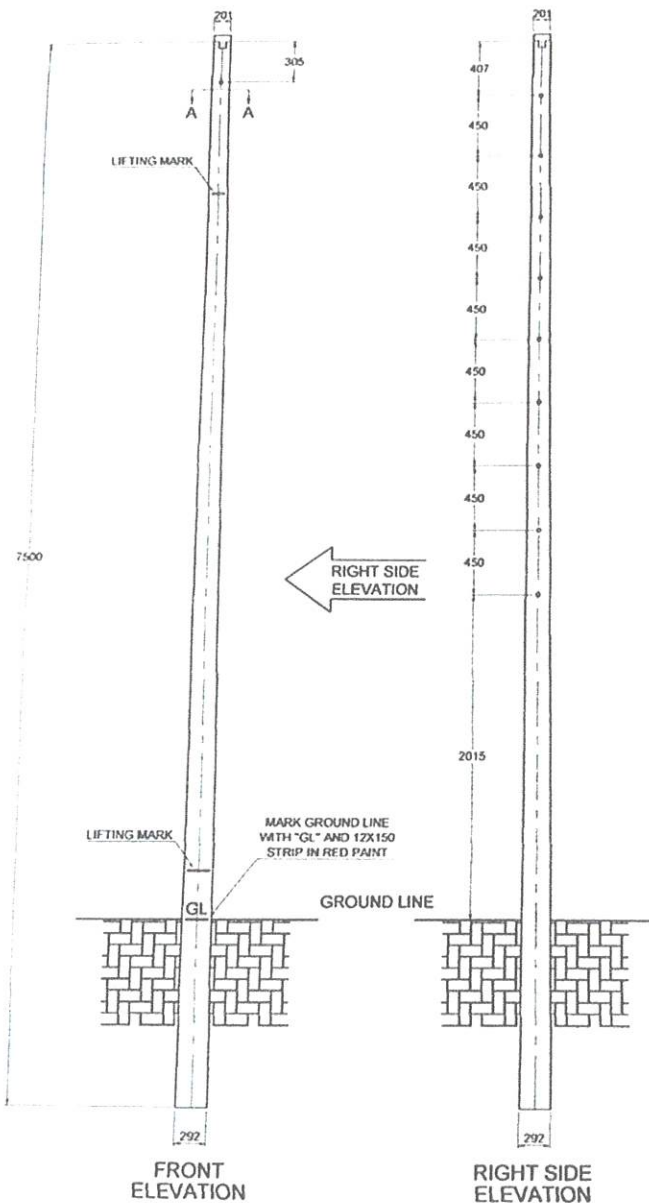


NOTES:

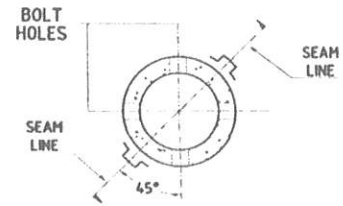
1. 18mm DIAMETER HOLES ARE THROUGH AND THROUGH UNLESS OTHERWISE SPECIFIED
2. LIFTING POINTS GROUND LINE, FACE AND BUTT MARKINGS SHALL BE INDICATED REFER TO DOCUMENTS NO GL PRO 009 FOR DETAILS OF POLE MARKING
3. TOLERANCE(S)
 - * TIP END AND BUTT END DIMENSIONAL DIAMETER - $\pm 6\text{MM}$
 - * LENGTH - $\pm 50\text{MM}$
 - * HOLE DIAMETER - $\pm 1.6\text{MM}$
 - * DISTANCE BETWEEN HOLES - $\pm 6\text{MM}$
4. ALL DIMENSIONS ARE IN MILLIMETERS UNLESS OTHERWISE SPECIFIED.

ANNEX B.

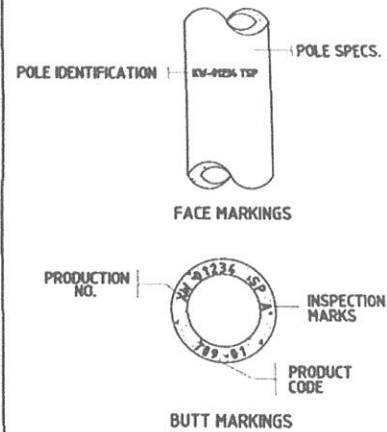
25 ft. Concrete Electrical Poles



SECTION THRU A - A



POLE MARKING DETAILS



NOTES:

1. 18mm DIAMETER HOLES ARE THROUGH AND THROUGH UNLESS OTHERWISE SPECIFIED
2. LIFTING POINTS GROUND LINE, FACE AND BUTT MARKINGS SHALL BE INDICATED REFER TO DOCUMENTS NO GL PRO 009 FOR DETAILS OF POLE MARKING
3. TOLERANCE(S)
 - x TIP END AND BUTT END DIMENSIONAL DIAMETER - $\pm 6\text{MM}$
 - x LENGTH - $\pm 50\text{MM}$
 - x HOLE DIAMETER - $\pm 16\text{MM}$
 - x DISTANCE BETWEEN HOLES - 6MM
4. ALL DIMENSIONS ARE IN MILLIMETERS UNLESS OTHERWISE SPECIFIED.

Truly yours,

NOEL V. REYES, MD, FPPA, MMH_oA
Medical Center Chief II

CONFORMED BY: _____
DATE AND TIME: _____